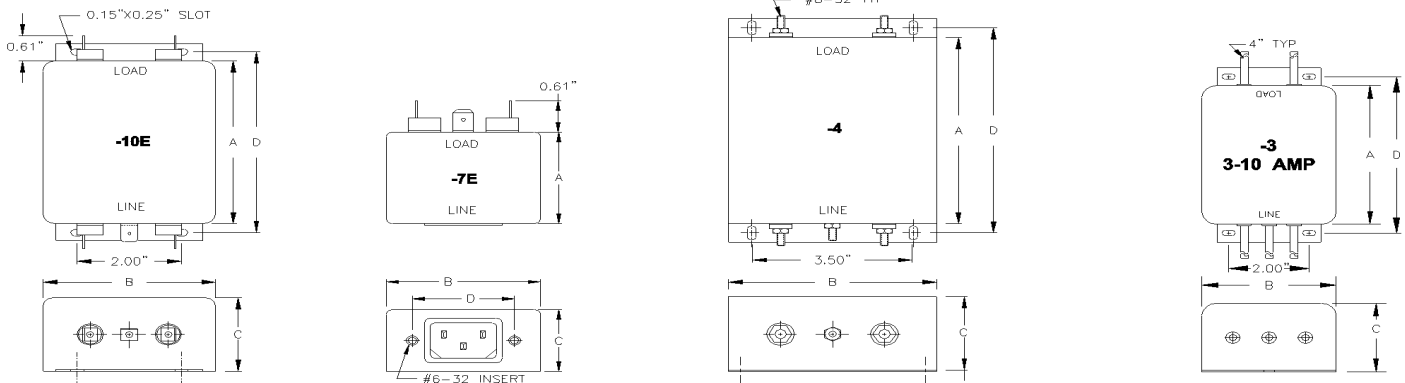


MEDICAL FILTERS, NON-PATIENT CARE, MA SERIES



FEATURES AND SPECIFICATIONS



SPECIFICATIONS

1.0 HIGHPOT RATING:

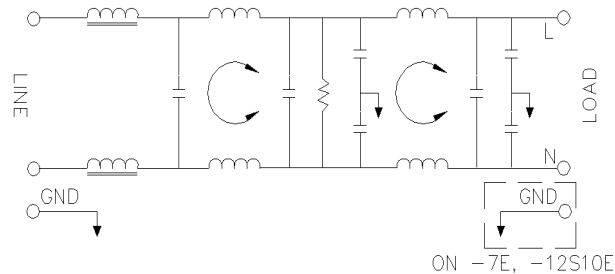
LINE-TO-GROUND: 2000 VAC
LINE-TO-LINE: 1750 VDC

2.0 MAXIMUM LEAKAGE CURRENT, EACH LINE TO GROUND.

115 VAC, 60 Hz: 25uA MAX
250 VAC, 60 Hz: 50uA MAX

3.0 PERFORMANCE

MHz.		0.01	0.02	0.05	0.15	0.50	1.00	5.00	10.00	30.00
C/M	L/G	25 dB	30 dB	40 dB	60 dB	65 dB	60 dB	50 dB	50 dB	50 dB
D/M	L/L	10 dB	15 dB	30 dB	65 dB	65 dB	65 dB	60 dB	60 dB	60 dB



4.0 RATED VOLTAGES AND FREQUENCY:

115/250 VAC, 47-63 Hz

APPLICATIONS

- * CE CERTIFICATION
- * MACHINERY DIRECTIVE
- * MEDICAL DIRECTIVE
- * PROCESS CONTROL EQUIPMENT
- * SURGE PROTECTION
- * UL544 AND UL2601-1 EQUIPMENT

FEATURES

- * TVSS PROTECTION
- * LOW LEAKAGE CURRENT
- * SUPERIOR C/M AND D/M REJECTION
- * CURRENT RATINGS 3-20 AMPS
- * OTHER TERMINATIONS ARE AVAILABLE

5.0 DIMENSIONS, (INCHES)

PART NUMBER	RATED CURRENT	DIMENSIONS (INCHES)			
		A	B	C	D
MA3-3	3A	2.00	2.00	1.50	2.37
MA3-7E	3A	2.88	2.13	1.50	1.57
MA3-10E	3A	2.00	2.00	1.50	2.37
MA6-3	6A	3.87	3.31	1.75	4.30
MA6-7E	6A	3.87	3.31	1.75	4.30
MA6-10E	6A	3.87	3.31	1.75	4.30
MA10-3	10A	5.25	2.00	2.75	5.62
MA10-10E	10A	5.25	2.00	2.75	5.62
MA15-4	15A	5.00	4.50	2.00	5.50
MA20-4	20A	5.00	4.50	2.00	5.50