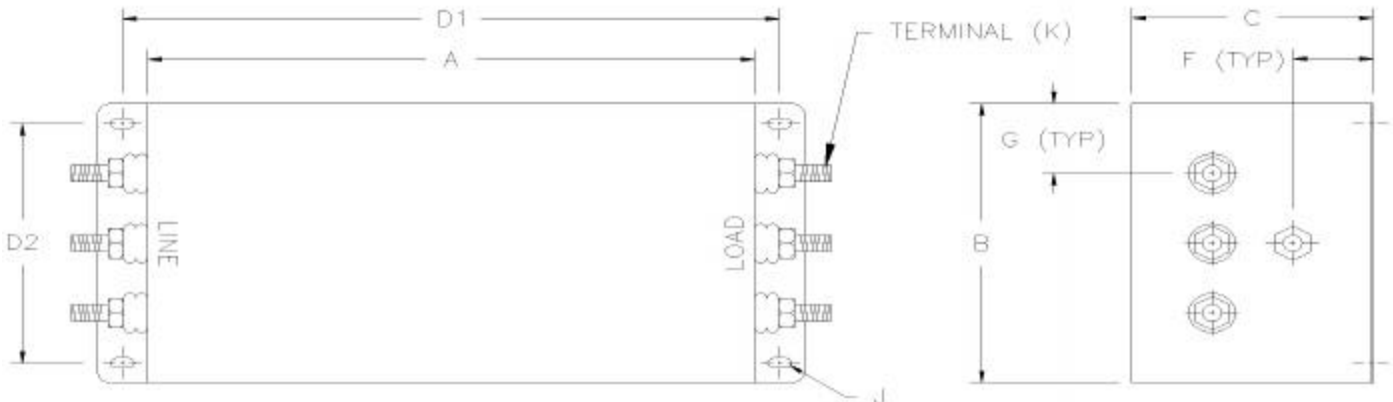


THREE PHASE DELTA, 250VAC, FILTERS, DC SERIES



FEATURES AND SPECIFICATIONS

LR46611



SPECIFICATIONS

1.0 HIGHPOT RATING:

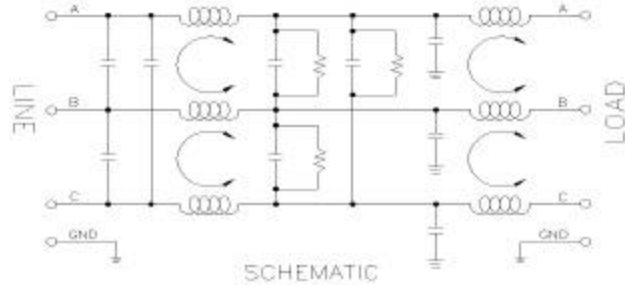
LINE-TO-GROUND: 2000 VAC
 LINE-TO-LINE: 1768 VDC

2.0 MAXIMUM LEAKAGE CURRENT, EACH LINE TO GROUND.

250 VAC, 60 Hz: 1.40 mA MAX

3.0 PERFORMANCE

	0.05	0.15	0.50	1.50	5.00	20.0	30.0
C/M L/G	10 dB	50 dB	55 dB	65 dB	65 dB	65 dB	65 dB
D/M L/L	20 dB	50 dB	50 dB	60 dB	60 dB	60 dB	60 dB



4.0 RATED VOLTAGES AND FREQUENCY: 250 VAC, 47-63 Hz

PART NUMBER	RATED CURRENT	5.0 DIMENSIONS (INCHES)								
		A	B	C	D1	D2	F	G	J	K
DC7-4FF	7A	7.00	4.00	4.00	7.81	3.25	1.33	1.00	.18 X .37	#8-32 UNC
DC20-4FF	20A	7.00	4.00	4.00	7.81	3.25	1.33	1.00	.18 X .37	#8-32 UNC
DC30-4FF	30A	8.00	5.00	4.75	9.00	4.00	1.58	1.25	25 X .50	#10-32 UNC
DC45-4FF	45A	11.00	5.00	4.75	12.00	4.00	1.58	1.25	.25 X .50	#1/4-20 UNC
DC60-4FF	60A	12.00	6.50	4.75	13.00	5.50	1.58	1.63	.31 X .62	#1/4-20 UNC
DC100-4FF	100A	12.00	6.50	4.75	13.00	5.50	1.58	1.63	.31 X .62	#3/8-16 UNC
DC150-4FF	150A	12.00	7.50	5.75	13.00	5.25	1.92	1.88	.31 X .62	#3/8-16 UNC

6.0 FEATURES

- * RUGGED CONSTRUCTION
- * REDUCES RADIATED EMISSIONS FROM VARIABLE FREQUENCY DRIVES
- * REDUCES CONDUCTED EMISSIONS FROM VARIABLE FREQUENCY DRIVES