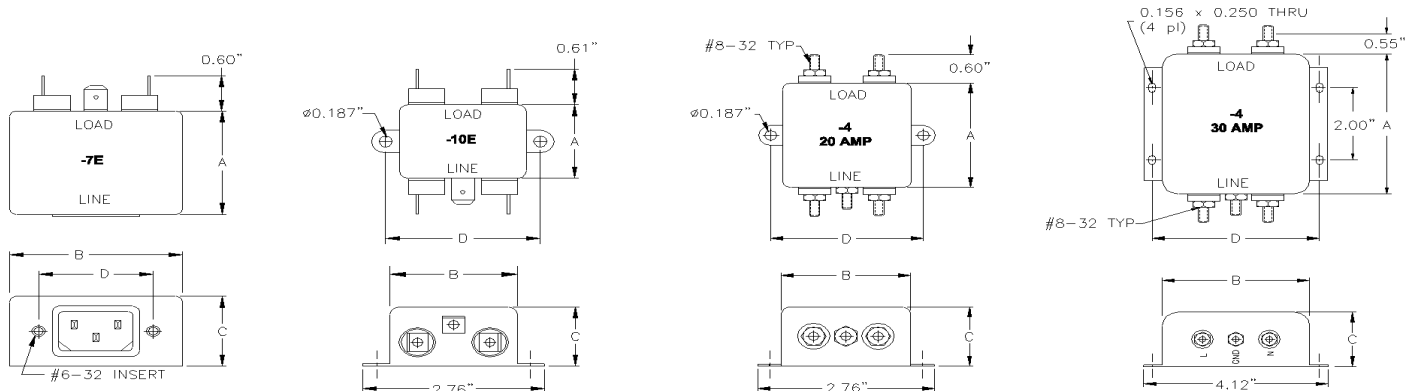




**TRI-MAG, Inc.**  
*your* POWER Specialists

1601 N. CLANCY CT. • VISALIA, CA 93291  
 (559) 651-2222 • FAX (559) 651-0188  
<http://www.tri-mag.com>  
<http://eemonline.com/tri-mag>  
 tri-mag@worldnet.att.net

## GENERAL PURPOSE FILTERS, A SERIES



## FEATURES AND SPECIFICATIONS



### SPECIFICATIONS

#### 1.0 HIGHPOT RATING:

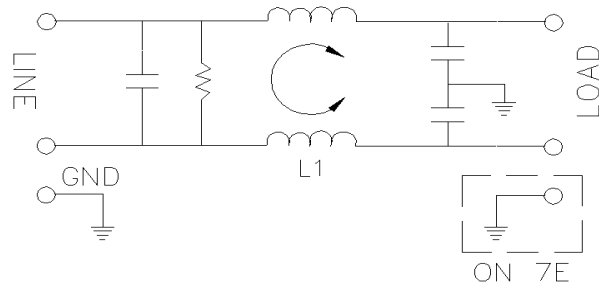
LINE-TO-GROUND: 2000 VAC  
 LINE-TO-LINE: 1750 VDC

#### 2.0 MAXIMUM LEAKAGE CURRENT, EACH LINE TO GROUND.

115 VAC, 60 Hz: 0.25 mA MAX  
 250 VAC, 60 Hz: 0.50 mA MAX

#### 3.0 PERFORMANCE

MHz	0.15	0.20	0.50	10.0	20.0	30.0
C/M L/G	15 dB	20 dB	25 dB	50 dB	50 dB	50 dB
D/M L/L	3 dB	10 dB	15 dB	40 dB	35 dB	39 dB



#### 4.0 RATED VOLTAGES AND FREQUENCY: 115/250 VAC, 47-63 Hz

#### 5.0 DIMENSIONS (INCHES)

PART NUMBER	RATED CURRENT	DIMENSIONS (INCHES)			
		A	B	C	D
A3-7E	3A	1.75	2.38	1.18	1.57
A3-10E	3A	1.25	1.75	1.00	2.13
A6-7E	6A	1.75	2.38	1.18	1.57
A6-10E	6A	1.25	1.75	1.00	2.13
A10-7E	10A	1.92	2.19	1.25	1.57
A10-10E	10A	1.25	1.75	1.00	2.13
A15-10E	15A	2.00	2.00	1.13	2.38
A20-4	20A	2.00	2.00	1.13	2.38
A30-4	30A	3.88	3.31	1.50	3.75

#### APPLICATION

- \* LINEAR POWER SUPPLIES
- \* DATA TERMINALS
- \* SMPS WITH ON-BOARD FILTER

#### FEATURES

- \* LOW COST CM REJECTION
- \* CURRENT RATINGS 3-30 AMPS
- \* OTHER TERMINATIONS ARE AVAILABLE.