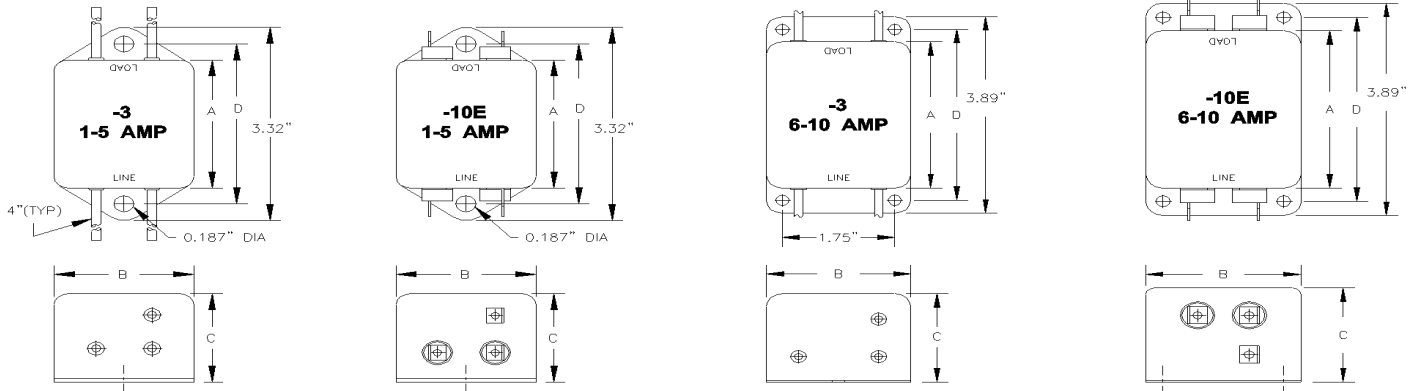




GENERAL PURPOSE FILTERS, K SERIES



FEATURES AND SPECIFICATIONS



SPECIFICATIONS

1.0 HIGHPOT RATING:

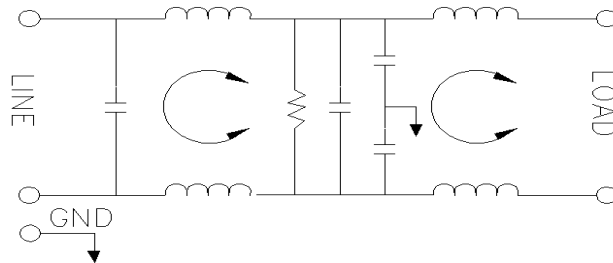
LINE-TO-GROUND: 2000 VAC
 LINE-TO-LINE: 1750 VDC

2.0 MAXIMUM LEAKAGE CURRENT, EACH LINE TO GROUND.

115 VAC, 60 Hz: 0.25 mA MAX
 250 VAC, 60 Hz: 0.50 mA MAX

3.0 PERFORMANCE

MHz.	0.15	0.20	0.50	1.00	10.0	20.0	30.0
C/M L/G	30 dB	60 dB	65 dB	65 dB	65 dB	65 dB	65 dB
D/M L/L	10 dB	50 dB	65 dB	65 dB	65 dB	65 dB	65 dB



4.0 RATED VOLTAGES AND FREQUENCY: 115/250 VAC, 47-63 Hz

5.0 DIMENSIONS (INCHES)

PART NUMBER	RATED CURRENT	DIMENSIONS (INCHES)			
		A	B	C	D
K1-3	1A	2.50	2.00	1.50	2.94
K1-10E	1A	2.50	2.00	1.50	2.94
K3-3	3A	2.50	2.00	1.50	2.94
K3-10E	3A	2.50	2.00	1.50	2.94
K5-3	5A	2.50	2.00	1.50	2.94
K5-10E	5A	2.50	2.00	1.50	2.94
K6-3	6A	2.88	2.25	1.50	3.37
K6-10E	6A	2.88	2.25	1.50	3.37
K10-3	10A	2.88	2.25	1.50	3.37
K10-10E	10 A	2.88	2.25	1.50	3.37

APPLICATIONS

- * CE CERTIFICATION
- * MACHINERY DIRECTIVE
- * MEDICAL DIRECTIVE
- * SYSTEMS WITH SWITCHING POWER SUPPLIES

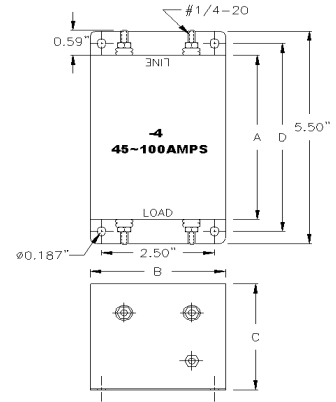
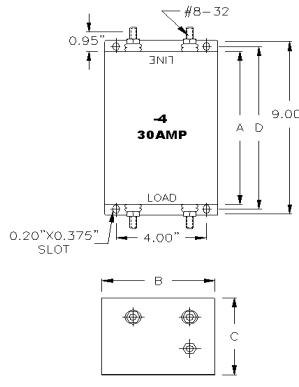
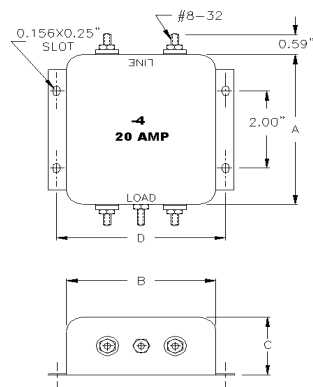
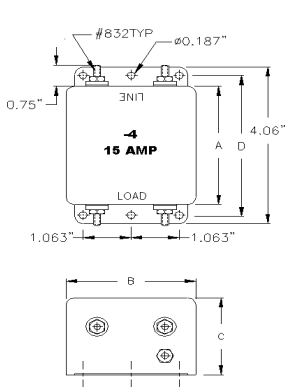
FEATURES

- * SURGE PROTECTION
- * CURRENT RATINGS 15 — 100 AMPS
- * TVSS PROTECTION.
- * SUPERIOR CM AND DM REJECTION
- * OTHER TERMINATIONS ARE AVAILABLE

K SERIES

HIGH CURRENT

15-100 AMPS



FEATURES AND SPECIFICATIONS



SPECIFICATIONS

1.0 HIGHPOT RATING:

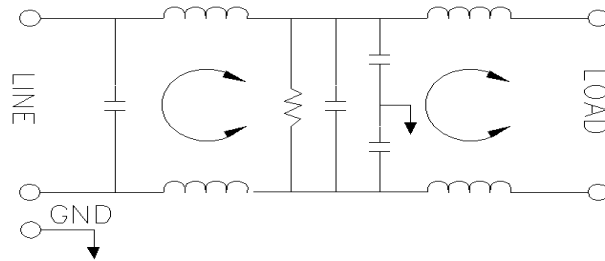
LINE-TO-GROUND: 2000 VAC
 LINE-TO-LINE: 1750 VDC

2.0 MAXIMUM LEAKAGE CURRENT, EACH LINE TO GROUND.

115 VAC, 60 Hz: 0.25 mA MAX
 250 VAC, 60 Hz: 0.50 mA MAX

3.0 PERFORMANCE

MHz.	0.15	0.20	0.50	1.00	10.0	20.0	30.0
C/M L/G	30 dB	60 dB	65 dB	65 dB	65 dB	65 dB	65 dB
D/M L/L	10 dB	50 dB	65 dB	65 dB	65 dB	65 dB	65 dB



4.0 RATED VOLTAGES AND FREQUENCY:
 115/250 VAC, 47-63 Hz

APPLICATIONS

- * CE CERTIFICATION
- * MACHINERY DIRECTIVE
- * MEDICAL DIRECTIVE
- * SYSTEMS WITH SWITCHING POWER SUPPLIES

FEATURES

- * SURGE PROTECTION
- * CURRENT RATINGS 15 — 100 AMPS
- * TVSS PROTECTION.
- * SUPERIOR CM AND DM REJECTION
- * OTHER TERMINATIONS ARE AVAILABLE

5.0 DIMENSIONS (INCHES)

PART NUMBER	RATED CURRENT	DIMENSIONS (INCHES)			
		A	B	C	D
K15-4	15A	3.06	2.88	2.00	3.62
K20-4	20A	3.88	3.31	1.50	3.75
K30-4	30A	4.25	3.00	2.75	4.87
K45-4	45A	8.00	5.00	4.00	8.50
K60-4	60A	8.00	5.00	4.00	8.50
K75-4	75A	8.00	5.00	4.00	8.50
K100-4	100A	8.00	5.00	4.00	8.50