



**TRI-MAG, Inc.**  
*your* POWER Specialists

1601 N. CLANCY CT. • VISALIA, CA 93291  
 (559) 651-2222 • FAX (559) 651-0188  
<http://www.tri-mag.com>  
[sales@tri-mag.com](mailto:sales@tri-mag.com)

# REDUNDANT POWER SYSTEM

## DZ400-RD SERIES

*400 Watts or 300 Watts N+1  
 HOT SWAPPABLE, CURRENT SHARING  
 SYSTEM*



### GENERAL SPECIFICATIONS

Input Voltage..... 90VAC to 264VAC  
 Input Frequency..... 47Hz to 63Hz  
 Power Factor.....>0.95  
 Inrush Current (cold)..... Less than 20A at  
 115VAC or 40A at 230VAC cold start, 25°C  
 Operating Temperature.....-40 to 65°C  
 Storage Temperature..... -20°C to 85°C  
 Cooling.....27 CFM  
 Efficiency.....80-87% Typical  
 Holdup Time.....>20ms  
 Overload Protection..... Reset

Safety (Modules):

Designed in full compliance with.....UL 60950-1

EMI.....EN55022 “B”

Harmonics.....EN61000-3-2 class D

EMS.....EN61000-4-2,-3,-4,-5,-6,-11

### DESCRIPTION

The DZ400-XXRD uses Tri-Mag’s standard DZ100 series units in an hot swappable redundant power system. With an active current sharing controller that monitors and adjusts the modules current for equal sharing, the DZ400-XXRD is configurable for a 100, 200, or 300 Watts redundant N+1 system for “Mission Critical” applications. The system comes in 12.0V, 15.0V, 24.0V, or 48.0V single output.

### FEATURES

- EMI FCC Class B
- Power Factor Correction
- LED Indicator for Each Module
- Universal input 90VAC to 264VAC
- Redundant N+1 configuration
- Hot Swappable
- Uses Standard off the shelf Power Supplies
- Rackmount 1U height
- Easy Module replacements

### APPLICATIONS

- “Mission Critical” application
- Telecommunication
- Industrial
- Medical (use DZ400M-RD series)

### INDIVIDUAL MODULES





**TRI-MAG, Inc.**  
*your* POWER Specialists

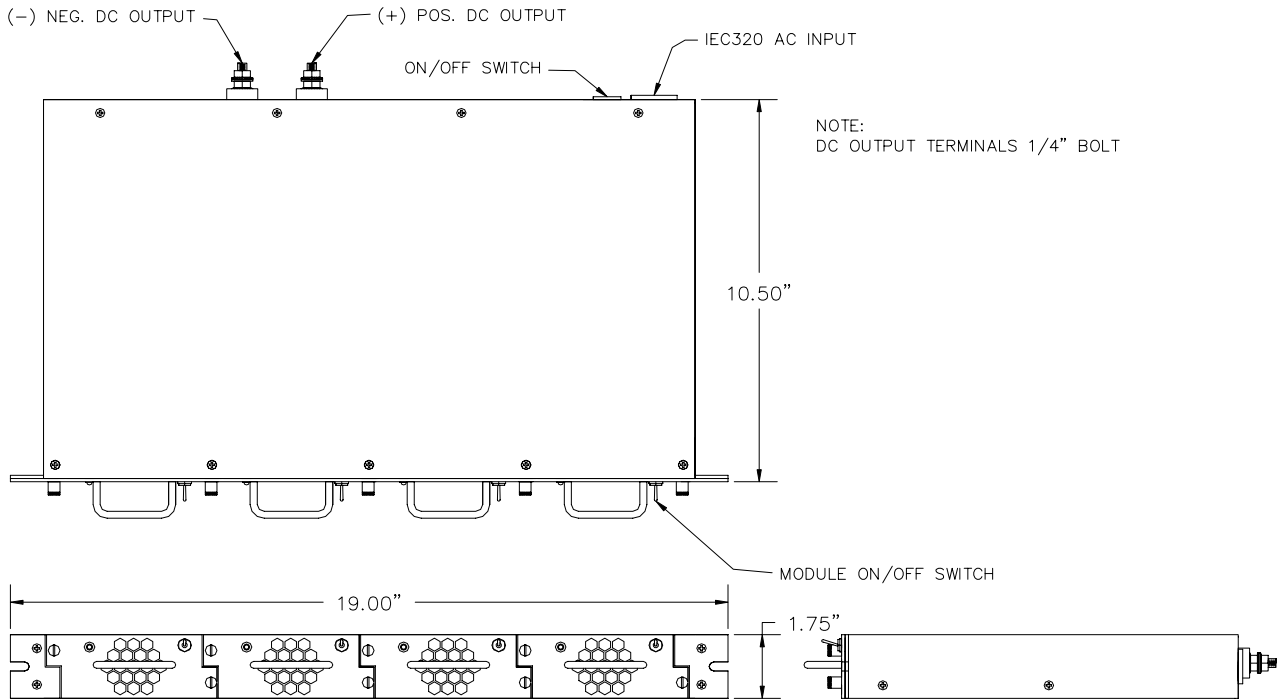
1601 N. CLANCY CT. • VISALIA, CA 93291  
 (559) 651-2222 • FAX (559) 651-0188  
<http://www.tri-mag.com>  
[sales@tri-mag.com](mailto:sales@tri-mag.com)

### OUTPUT SPECIFICATIONS

Model	Watts	Voltage (Vdc)	Load (A)			Tolerance ±	Ripple & Noise	Regulation	
			Min.	Rate	Peak			Line	Load
DZ400-7RD	400	+12V	0	33.4	37.5	1%	150 mV	±1%	±2%
DZ400-8RD	400	+15V	0	26.7	30	1%	150 mV	±1%	±2%
DZ400-9RD	400	+24V	0	16.7	18.8	1%	200 mV	±1%	±1.5%
DZ400-14RD	400	+48V	0	8.4	9.4	1%	200 mV	±1%	±1.5%

Medical grade available , add "M" to part number (DZ400M-7RD)

### MECHANICAL SPECIFICATIONS



### HOT SWAP MODULES

