



TRI-MAG, Inc.
your POWER Specialists

1601 N. CLANCY CT. • VISALIA, CA 93291
 (559) 651-2222 • FAX (559) 651-0188
<http://www.tri-mag.com>
sales@tri-mag.com

DZ065 SERIES

55 Watts For Medical & Industrial Applications



GENERAL SPECIFICATIONS

Input Voltage..... 90VAC to 264VAC
 Input Frequency..... 47Hz to 63Hz
 Inrush Current (cold)..... Less than 30A at 115VAC, 25°C
 Operating Temperature..... 0 to 70°C
 Storage Temperature..... -40°C to 85°C
 Cooling..... Free Air Convection
 Efficiency..... 85 Typical
 Holdup Time..... >14ms at 115VAC
 Overvoltage Type..... Latch off
 Overload Protection..... Auto-recovery
 Short Circuit Protection..... Auto-recovery
 Earth Leakage..... 300µ Max @ 240VAC
 Designed in full compliance with UL 60950-1, UL60601-1
 CSA 22.2 #60950-1, #601.1
 EN60950, EN60601-1
 EMIEN55022 "B", EN55011 "B"
 FCC docket class "B"
 EMS.....EN61000-4-2,-3,-4,-5,-6,-8,-11

DESCRIPTION

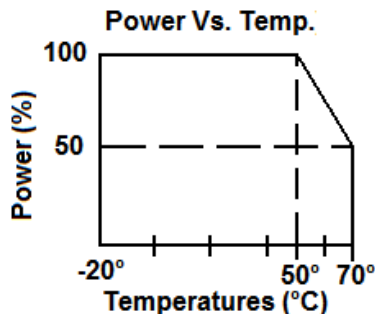
DZ065 series is a universal input power supply. The series is a 55 watts power supply in the size of 2"x 4" with a wattage density of 5.7W/in³. The efficiency can reach up to 85%.

FEATURES

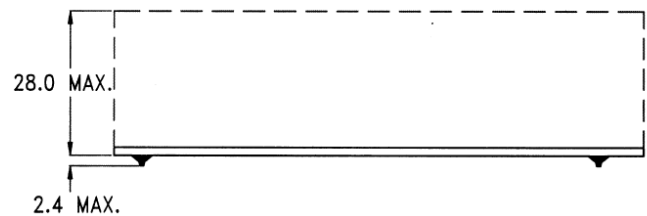
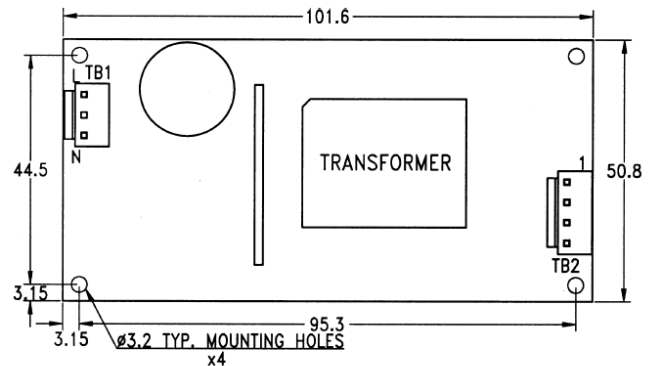
- EMI FCC Class B
- No Minimum Load Required
- Single Output
- Universal input 90VAC to 264VAC
- Low Leakage
- Double Fused

APPLICATIONS

- Computer Peripherals
- Telecommunications
- Tape Drives
- Test Instrumentation Product
- Data Acquisition
- Medical & Dental



MECHANICAL SPECIFICATIONS



Connector: TB1—AC input : JST B2P3-VH or equivalent
 TB2—DC output : JST B4P-VH or equivalent
 Size: 101.6mm X 50.8mm X 30.4mm, 4" X 2" X 1.2"
 Pin Assignment: P1 Vout
 P2 Vout
 P3 Com
 P4 Com



TRI-MAG, Inc.
your POWER Specialists

1601 N. CLANCY CT. • VISALIA, CA 93291
 (559) 651-2222 • FAX (559) 651-0188
<http://www.tri-mag.com>
sales@tri-mag.com

OUTPUT SPECIFICATIONS

Model	Watts	Voltage (Vdc)	Load (A)			Tolerance ±	Ripple & Noise	Regulation	
			Min.	Rate	Peak			Line	Load
DZ065-7	55	+12V	0	4.6	5.4	1%	100 mV	0.5%	±0.5%
DZ065-8	55	+15V	0	3.7	4.3	1%	100 mV	0.5%	±0.5%
DZ065-9	55	+24V	0	2.3	2.7	1%	200 mV	0.5%	±0.5%
DZ065-14	55	+48V	0	1.15	1.35	1%	200 mV	0.5%	±0.5%
DZ065-18	55	+3.3V	0	8.0	10	1%	50 mV	0.5%	±1.5%
DZ065-6	55	+5V	0	7.0	9.0	1%	50 mV	0.5%	±1.5%

Note: Contact factory for Safety Agency Approved status.

- Each output can provide up to peak load temporarily. Continuous staying in more than rated load is not allowed.
- At factory, in 60% rated load condition, each output is checked to be within voltage accuracy.
- Line regulation is defined by changing ±10% of input voltage from nominal line at rated load.
- Load regulation is defined by changing ±40% of measured output load from 60% rated load.
- The ripple and noise is measured by using 15MHz bandwidth limited oscilloscope and terminated each output with a 0.47 µF capacitor at rated load and nominal line.
- Hold up time is measured from the end of the last charging pulse to the time which the main output drops down to 95% output voltage at rated load and nominal line.
- Efficiency is measured at rated load.

ENCLOSURES (optional)

Note: Package options are available for this series, EU type (U shape) and EC type (Enclosed)

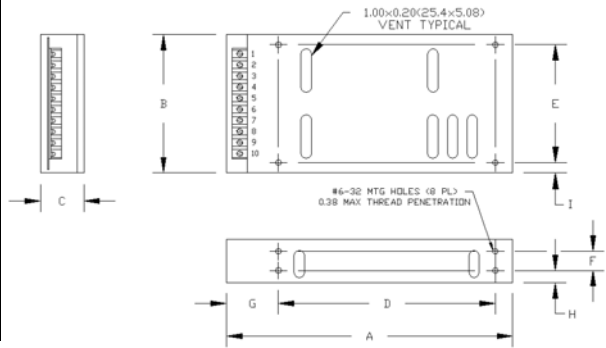
EC



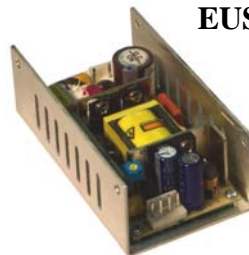
EU



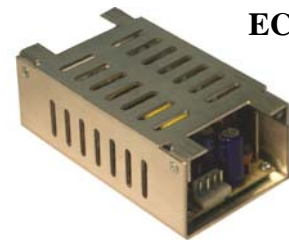
Figure	Inches	(mm)
A	5.00	127
B	2.77	70.4
C	1.60	40.6
D	2.65	67.3
E	2.00	51
F	-	-
G	1.00	25.4
H	0.80	20.3
I	0.38	9.7
J	2.50	63.5



EUS



ECS



*Note DY040 pictured in chassis

Our Standard power supplies, the DZ065 Series, can be installed into a fully enclosed chassis or in a 'U' shape chassis as an option. These options offer two mounting planes to choose from. The fully enclosed option help to reduce radiated noise.