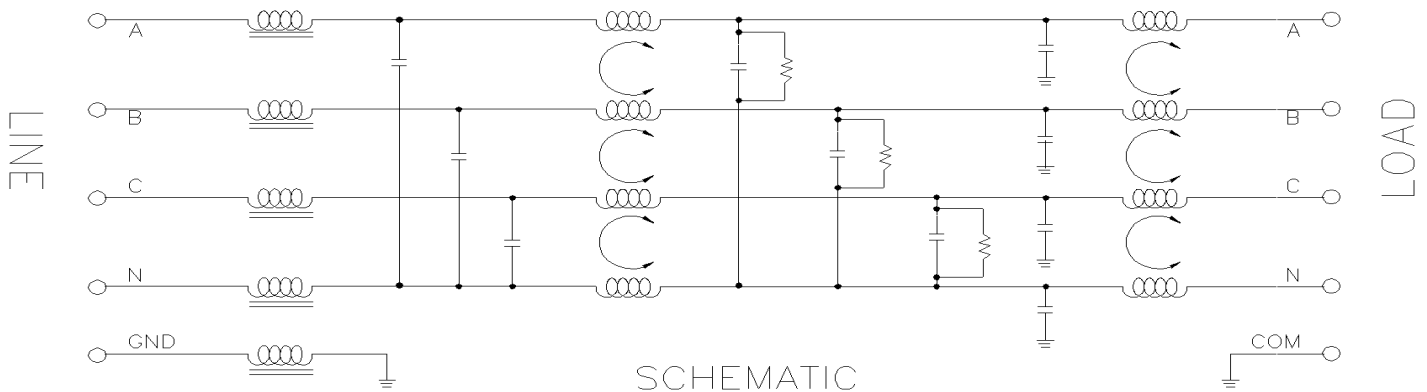


THREE PHASE WYE FILTERS, 250/440VAC, TPYBV FILTERS



FEATURES AND SPECIFICATIONS



SPECIFICATIONS

1.0 HIGHPOT RATING:

LINE-TO-GROUND: 2000 VAC
 LINE-TO-LINE: 2400 VDC

3.0 RATED VOLTAGES AND FREQUENCY:

250/440 VAC, 47-63 Hz

2.0 MAXIMUM LEAKAGE CURRENT, 250 VAC, 60 Hz, EACH LINE TO GROUND.

1.0 mA, MAX

4.0 PERFORMANCE

	0.01	0.05	0.15	0.50	1.50	5.00	20.00
C/M L/G	20 dB	30 dB	65 dB	65 dB	65 dB	60 dB	65 dB
D/M L/L	15 dB	30 dB	60 dB	65 dB	65 dB	60 dB	60 dB

5.0 DIMENSIONS

PART NUMBER	RATED CURRENT AMPS	NOTE: FOR MOUNTING OPTIONS SEE PAGE 2										
		A	B	C	D1	D2	D3	D4	F	G	J	K
TPYBV7-4FF	7.5	7.00	4.00	4.00	7.81	3.25	—	—	1.33	0.80	.18X.37	#8-32UNC
TPYBV7-4IF	7.5	7.00	4.00	4.00	—	3.25	3.25	7.40	1.33	0.80	.18X.37	#8-32UNC
TPYBV7-4SF	7.5	7.00	4.00	4.00	—	3.25	3.25	7.40	1.33	0.80	.18X.37	#8-32UNC
TPYBV20-4FF	20	7.00	5.00	3.00	7.50	4.00	—	—	1.00	1.00	.18X.37	#8-32UNC
TPYBV20-4IF	20	7.00	5.00	3.00	—	4.00	2.00	7.25	1.00	1.00	.18X.37	#8-32UNC
TPYBV20-4SF	20	7.00	5.00	3.00	—	4.00	2.00	7.25	1.00	1.00	.18X.37	#8-32UNC
TPYBV30-4FF	30	8.00	5.00	4.75	9.00	4.00	—	—	1.58	1.00	.18X.37	#10-32UNC
TPYBV30-4IF	30	8.00	5.00	4.75	—	4.00	3.75	8.50	1.58	1.00	.18X.37	#10-32UNC
TPYBV30-4SF	30	8.00	5.00	4.75	—	4.00	3.75	8.50	1.58	1.00	.18X.37	#10-32UNC

6.0 FEATURES

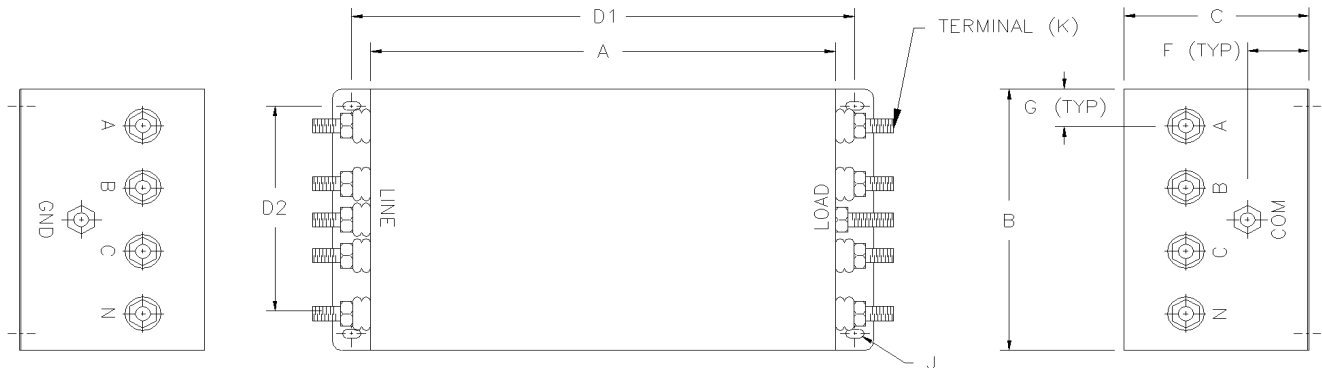
- * RUGGED CONSTRUCTION
- * REDUCES RADIATED AND CONDUCTED EMISSIONS FROM VFD
- * SUITABLE EITHER FOR WYE OR DELTA CONNECTION



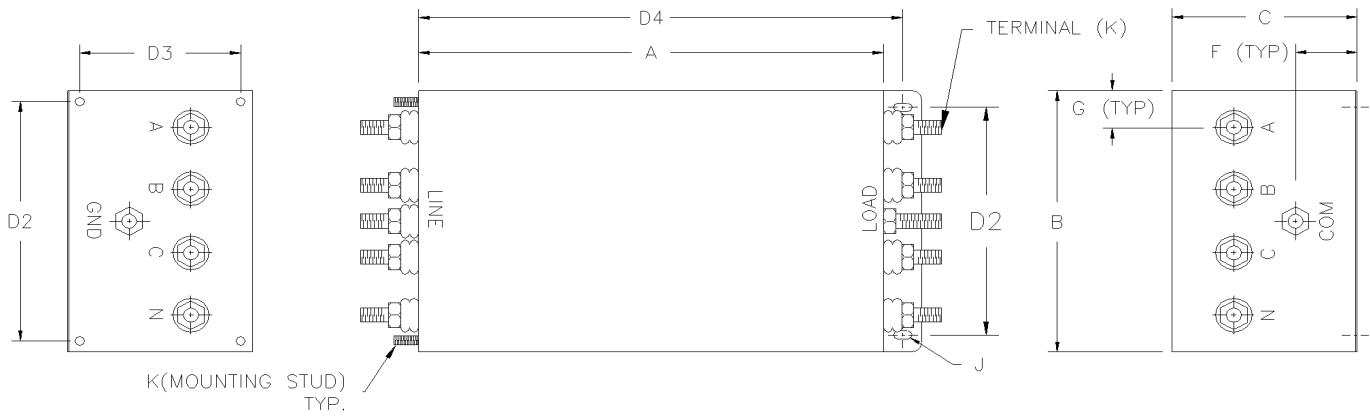
TRI-MAG, Inc.
your POWER Specialists

1601 N. CLANCY CT. • VISALIA, CA 93291
 (559) 651-2222 • FAX (559) 651-0188
<http://www.tri-mag.com>
<http://eemonline.com/tri-mag>
 tri-mag@worldnet.att.net

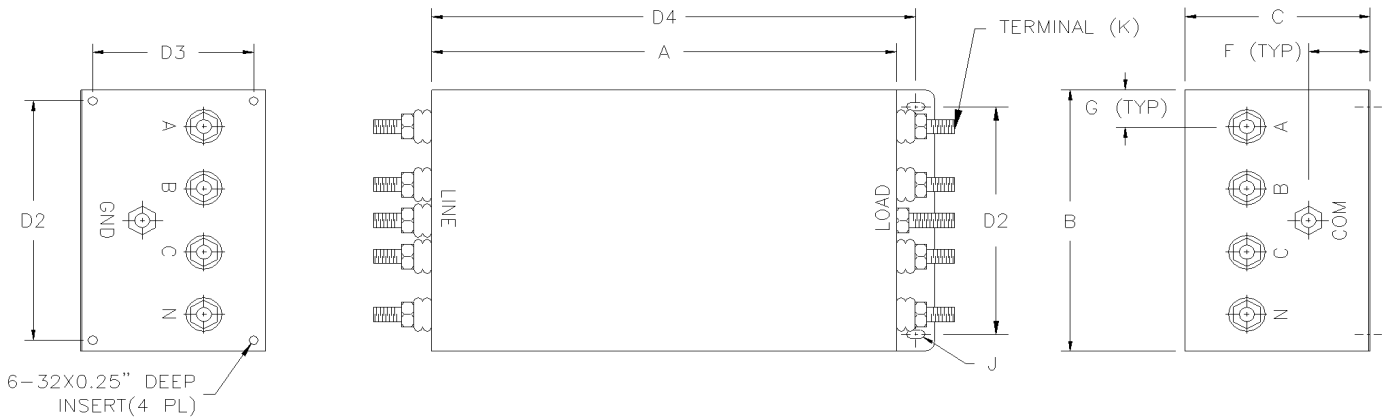
THREE PHASE WYE FILTERS, 250/440VAC, TPYBV FILTERS



FF_OPTION



SF_OPTION



IF_OPTION