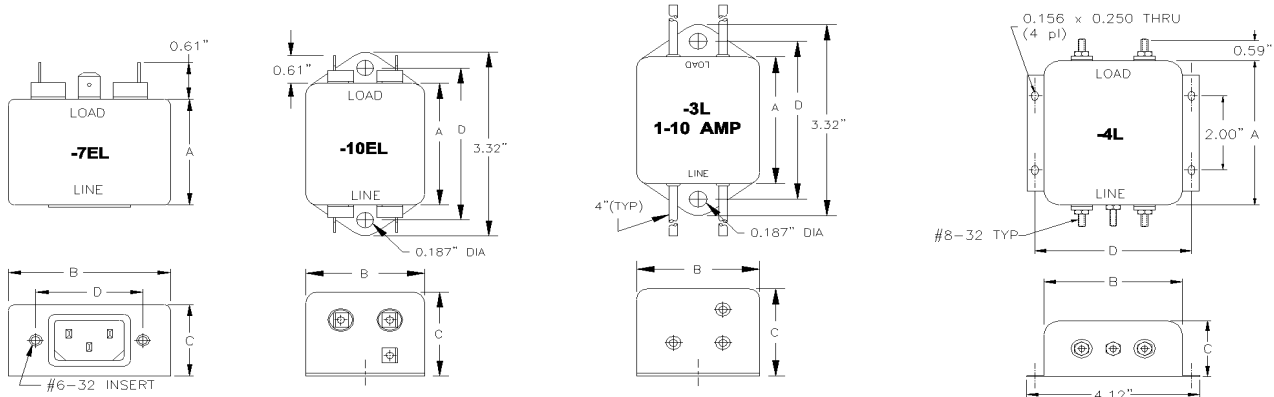




MEDICAL FILTERS, PATIENT CARE, FL SERIES



FEATURES AND SPECIFICATIONS



SPECIFICATIONS

1.0 HIGHPOT RATING:

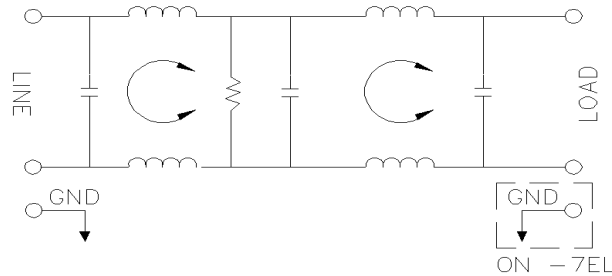
LINE-TO-GROUND: 2000 VAC
 LINE-TO-LINE: 1750 VDC

2.0 MAXIMUM LEAKAGE CURRENT, EACH LINE TO GROUND.

115 VAC, 60 Hz: 2.0uA MAX
 250 VAC, 60 Hz: 4.0uA MAX

3.0 PERFORMANCE

MHz.	0.15	0.50	1.00	10.00	30.00
3.0 AMP L/L	18 dB	40 dB	45 dB	50 dB	50 dB
6-20 AMP L/L	30 dB	40 dB	50 dB	50 dB	50 dB



4.0 RATED VOLTAGES AND FREQUENCY: 115/250 VAC, 47-63 Hz

5.0 DIMENSIONS (INCHES)

PART NUMBER	RATED CURRENT	DIMENSIONS (INCHES)			
		A	B	C	D
F3-3L	3A	1.75	1.25	1.00	2.13
F6-3L	6A	2.50	2.00	1.50	2.94
F6-7EL	6A	2.50	2.19	1.50	1.57
F6-10EL	6A	2.50	2.00	1.50	2.94
F10-3L	10A	2.50	2.00	1.50	2.94
F10-7EL	10A	2.88	2.13	1.50	1.57
F10-10EL	10A	2.50	2.00	1.50	2.94
F20-4L	20A	3.88	3.31	1.50	3.75

APPLICATIONS

- * MEDICAL PATIENT CARE EQUIPMENT
- * SURGE SUPPRESSION
- * LINEAR POWER SUPPLIES
- * UL544 AND UL2601-1 EQUIPMENT

FEATURES

- * IEC CONNECTOR INPUTS
- * LOW LEAKAGE CURRENT
- * LOW COST
- * COMPACT IN SIZE
- * OTHER TERMINATIONS ARE AVAILABLE